



## 16 Garry Way

, Shotts, ML7 4HN

**£695 Per month**

- Newly upgraded and renovated throughout
- Newly installed bathroom suite
- new fitted kitchen with integrated oven hob and cooker hood
- 2 double bedrooms
- double glazing
- gas central heating
- gardens to front and rear

### Viewing

Please contact our Pomphreys Properties Ltd Office on 01698373365 if you wish to arrange a viewing appointment for this property or require further information.



2



1

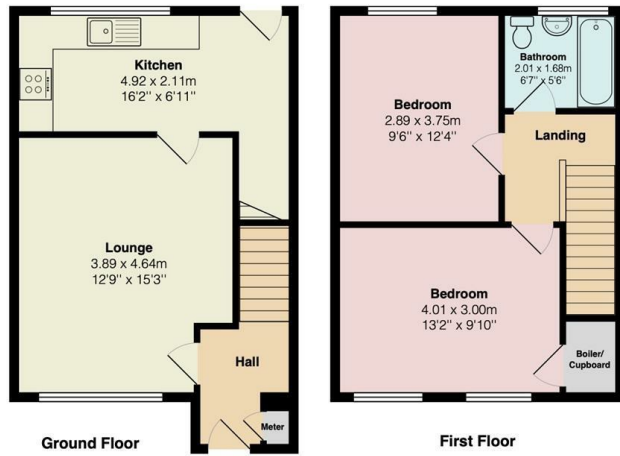


1



## Floor Plan

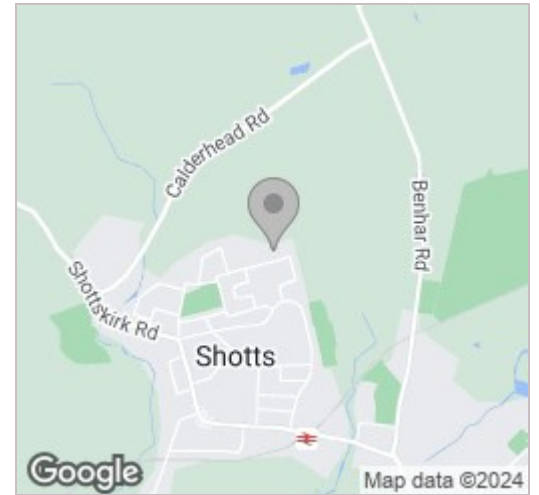
16 Garry Way, Shotts



Total Area: 69.8 m<sup>2</sup> ... 751 ft<sup>2</sup>  
All measurements are approximate and for display purposes only



## Area Map



## Energy Efficiency Graph



These particulars, whilst believed to be accurate are set out as a general outline only for guidance and do not constitute any part of an offer or contract. Intending purchasers should not rely on them as statements of representation of fact, but must satisfy themselves by inspection or otherwise as to their accuracy. No person in this firms employment has the authority to make or give any representation or warranty in respect of the property.